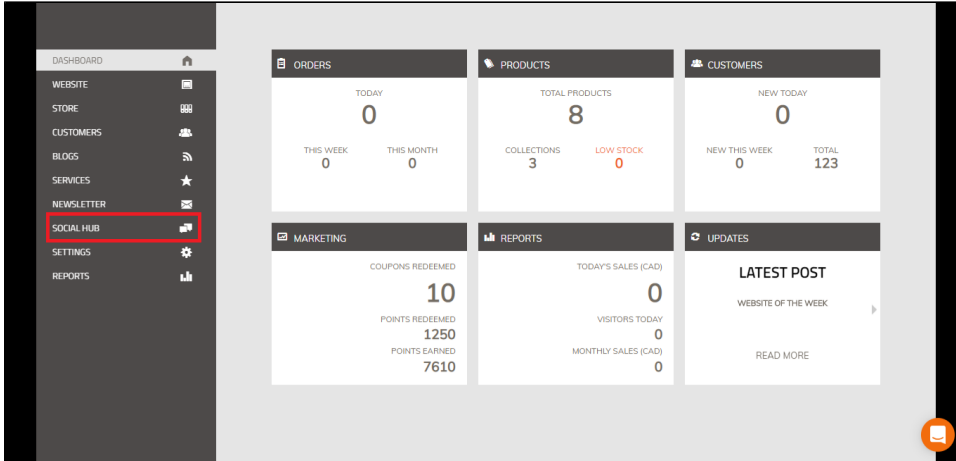


# Connect accounts

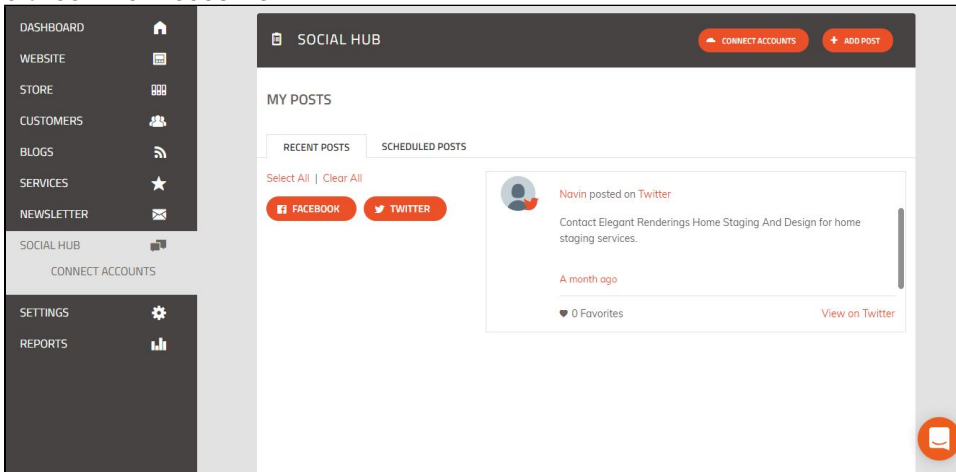
You can use **SOCIAL HUB** to connect third-party accounts to the website.

## Connect a Facebook account

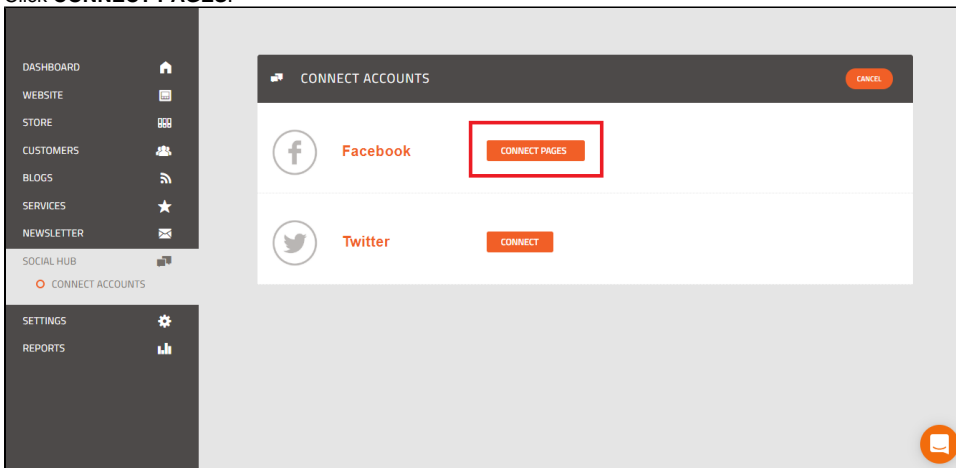
1. Log in to [Webware.io](http://Webware.io).
2. Click **SOCIAL HUB** on the left menu.



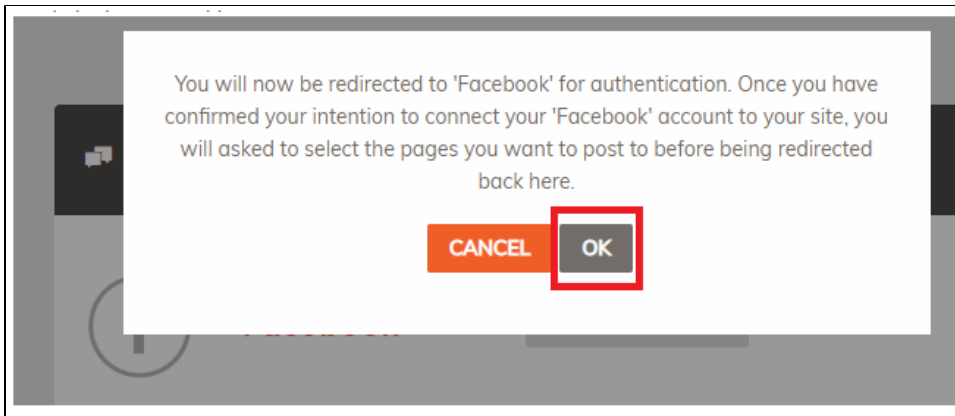
3. Click **CONNECT ACCOUNTS**.



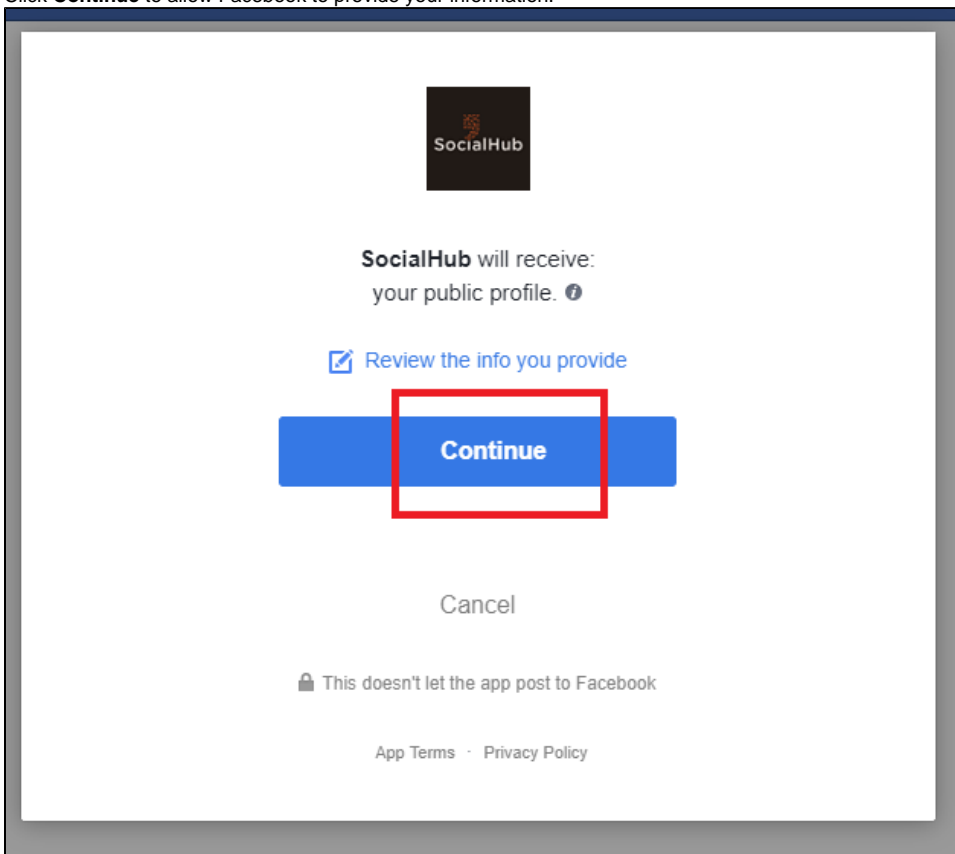
4. Click **CONNECT PAGES**.



This pop-up window appears.



5. Click **OK** to continue the authentication on the pop-up window.
6. Log in to a Facebook account.
7. Click **Continue** to allow Facebook to provide your information.

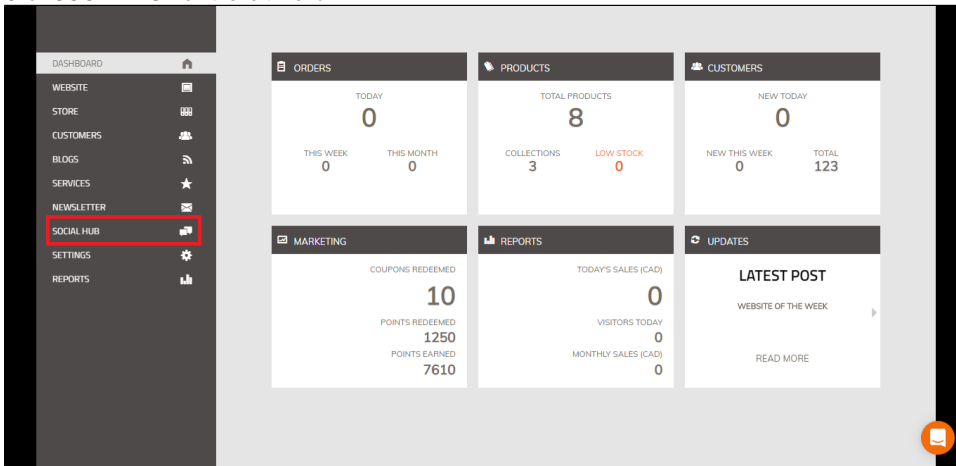


8. Click **OK** to allow **SocialHub** to manage your Pages and publish as Pages you manage. You are redirected to the SELECT PAGES page.
9. Select your Facebook page under the Pages section.
10. Click **SAVE**.

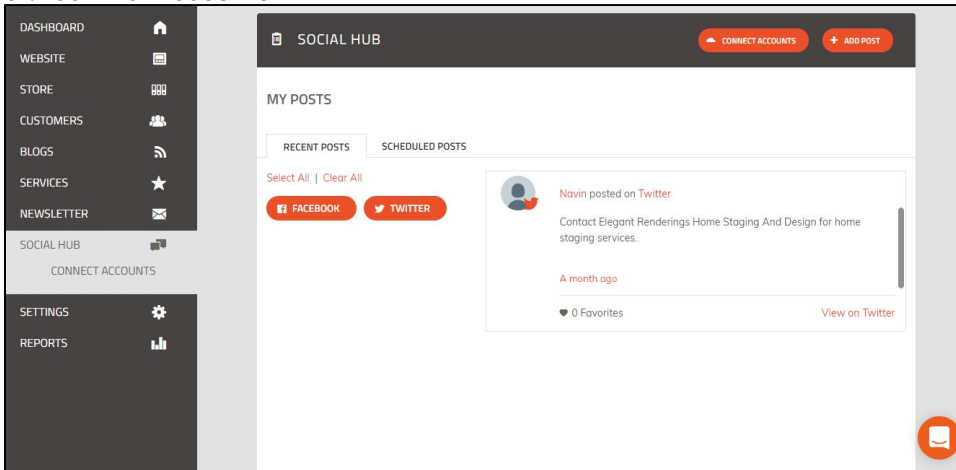
## Connect a Twitter account

1. Log in to [Webware.io](https://www.webware.io).

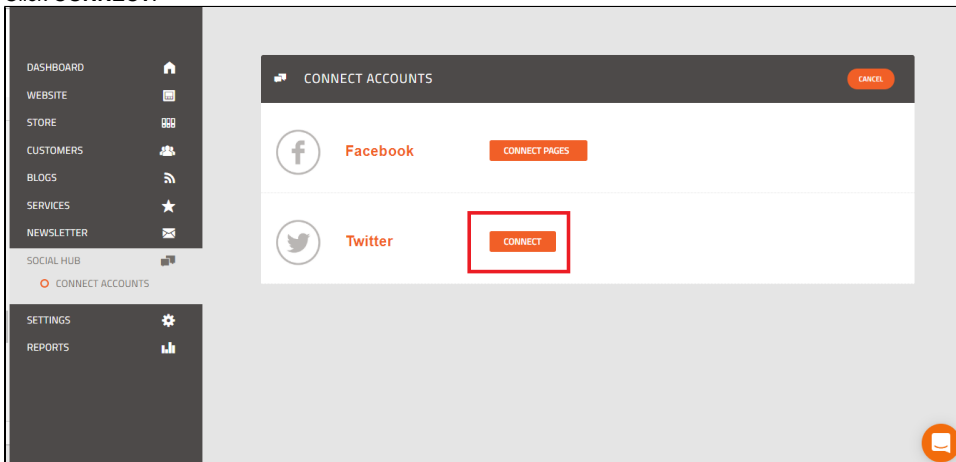
2. Click **SOCIAL HUB** on the left menu.



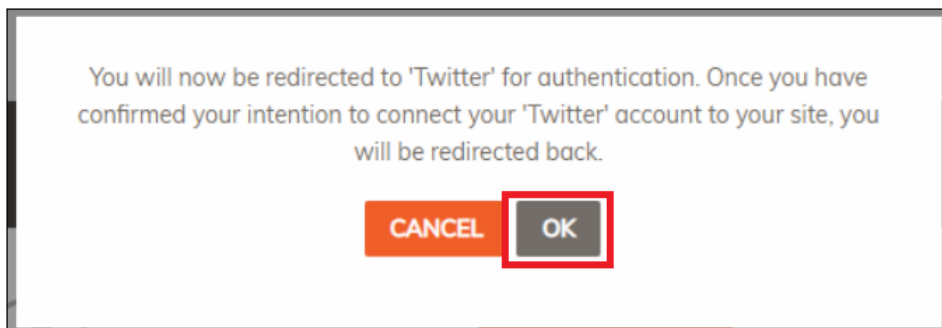
3. Click **CONNECT ACCOUNTS**.



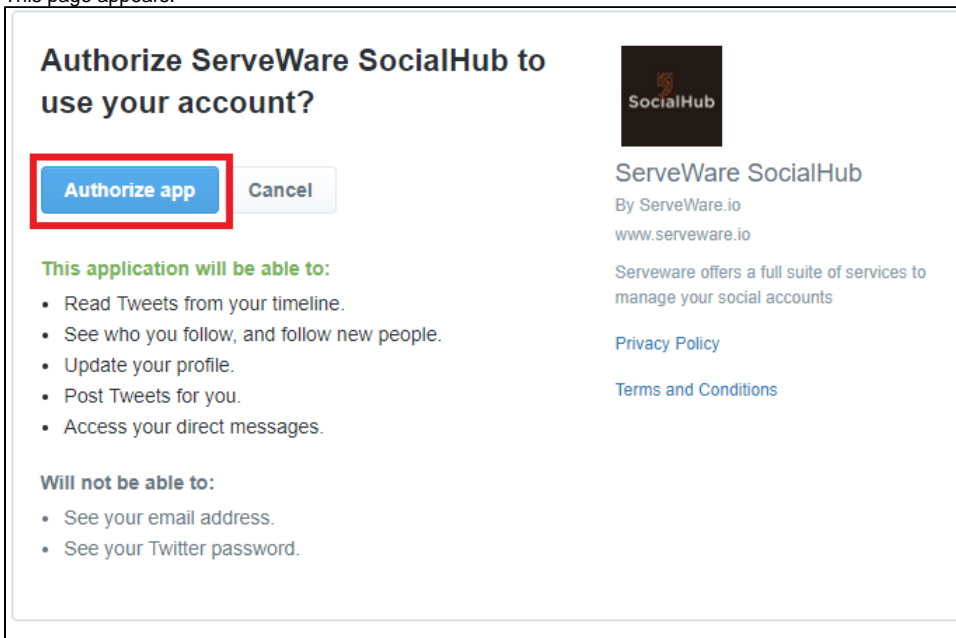
4. Click **CONNECT**.



This pop-up window appears.



5. Select **OK** to continue the authentication in the pop-up window.
6. Log in to a Twitter account.  
This page appears.



7. Click **Authorize app** to allow Webware to use the Twitter account.  
You are redirected to the **CONNECT ACCOUNTS** page.

#### Related articles

- [Social Hub](#)
- [Connect accounts](#)
- [Add social media posts](#)
- [Send a newsletter](#)
- [How to charge shipping fees](#)